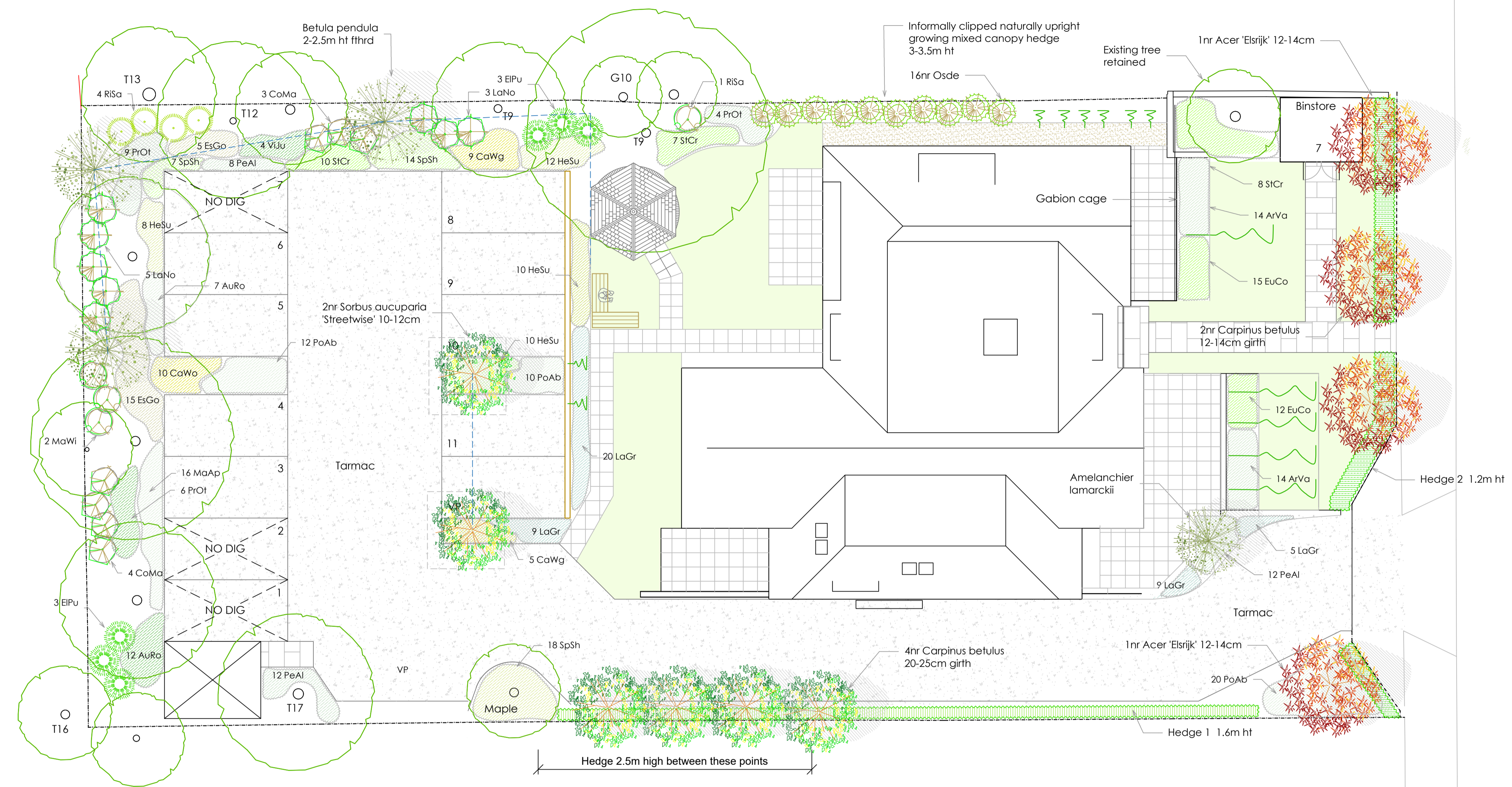


203



KEY

- Lawn
- New planting beds
- Specimen & structural shrub planting
- Marshals Saxon natural paving 600x600
- Marshals Saxon natural paving 900x600
- Tarmac
- Decorative gravel / utility areas
- 1.2m high steel railings

- Existing trees
- Smaller standard trees where space is limited
- Feathered & multistem trees
- Medium sized structural and screening trees
- Feature/ornamental trees
- Strata cell or similar rootzone modules
- Climbing plants



Landing and ramped approach -  
5m @ 1:12  
10m @ 1:15  
Level approach 1:20

landscape connection

Turret House, The Avenue, Amersham, Bucks, HP7 0AB  
01494 729991 www.landscapeconnection.co.uk

CLIENT	REVISIONS
MANOR PARK CONSTRUCTION	A Engineering revs 17-3-16
	B General revs 27-5-16
SITE	C General revs 12-6-16
201 WEST WYCOMBE RD HIGH WYCOMBE	D General revs 12-10-16

DRAWING LANDSCAPE PLAN

DATE PL

DRWG NR 21-1-16

SCALE LC-2516-01

ISSUE 1:100 @ A1

**SOFT LANDSCAPE WORKS - MATERIALS AND WORKMANSHIP**  
All plants and planting to comply with the requirements of all current /relevant British Standard specifications including BS 3936: Part 1 (1992), Part 2 (1990) and Part 4 (1984) and BS 5236 (1975) where applicable, BS 4428 (1989) and the BAU / LU / Nursery Trade Tender Document (5th Edition 1986). All plants to be supplied in accordance with the plant schedule. Any plant material planted outside the recognized planting season (Nov-Feb), to be containerized stock and supplied at the sizes specified.

**TREE PLANTING**  
All trees are to be planted as shown ensuring a minimum of 5 metres from buildings and 3 metres from drainage and services. Where necessary, root barriers to be installed (supplier Greenleaf or similar approved), as recommended by structural engineer. Allow for the use of container grown stock during the period 1 April to 31 October, and field grown stock from 1 November to 31 March.

**TOPSOIL REQUIREMENTS**  
To BS 3882 (2007). All areas shall be cultivated to a minimum depth of 150mm. Full weed, rubbish and stones over 20mm gauge shall be removed. Earth to be rolled as required and raked in two directions. Shrub / structure planting beds - 450mm depth. Where necessary increase tree pit dimensions to ensure that tree pits are at least 75mm deeper and 150mm wider than root ball. Break up bottom of pits to a depth of 150mm. Compacted glazed sides of pits should be roughened.

**LANDSCAPING**  
All plant material shall conform to BS3936:Part 1. The planting shall be carried out after completion of the buildings and prior to occupation. All topsoil shall be imported to BS3882:2007, Multi-purpose topsoil. The soil shall be moved and stock piled in accordance with BS2882:2007, Ph 5.5-7.8. The nutrient content shall confirm to index values set out in the BS. Crumb structure shall be typically 2-7mm diameter, each comprising an aggregate of soil particles attracted around a sticky humus centre.

All shrubs to be planted a minimum of 450mm deep consisting of top soil and tree and shrub planting compost in a ratio of 4:1. A slow release fertiliser shall be incorporated into the soil at the time of planting. The planting shall be well watered in. After planting all shrubs shall be covered with a 75mm layer of bark mulch to reduce weed growth. Tree pits to be excavated 150mm wide and deeper than the rootball or spread, min size 800x800x700mm. The pit shall be backfilled with topsoil and free compost in a ratio of 4:1 and a slow release fertiliser. Trees shall be double staked with long tree stakes a cross bar and bio-degradable tie ties. Perforated flexible land drainage pipes shall be incorporated into the pits and laid around the rootball for irrigation of the trees. Min tree depth 750mm.

Grass seeding: mown grass areas shall be seeded into prepared ground with 150mm depth topsoil. A general hard wearing grass seed shall be sown of the manufacturers recommended application rate. Maintenance (First 24 Months) - all beds shall be kept free from weed and clean of rubbish, using hand tools or a glyphosate based herbicide if there are invasive weeds.

All trees and shrubs shall be adequately watered in dry periods to ensure their continued growth. Trees in grass shall have a 1m diameter circle sprayed out to reduce competition by grass. Tree ties shall be checked and adjusted as necessary. General grass areas to be mown on a regular basis.

All landscaped areas shall be maintained by the householder in perpetuity and the following works are recommended: Keep all shrub beds free from weed and rubbish. All trees and shrubs to be adequately watered during dry periods to ensure their continued growth. Tree ties to be loosened as required and removed after 3-5 years when the trees have established their root system.

Where shrub beds border mown grass the shrub beds shall be kept edged. General grass areas shall be mown on a regular basis and grass shall not be allowed to grow over 60mm in height. Any plants which die shall be replaced with the same species within 1 year. Plants and shrubs to be pruned to improve their shape and health as required.

TREE & HEDGE SCHEDULE

NR	PLANT	SIZE
TREES & LARGE SHRUBS		
2	Amelanchier lamarckii	15lt
2	Acer campestre 'Elsrijk'	12-14cm girth
3	Betula pendula	2-2.5m ht fthrd
3	Carpinus betulus	20-25cm girth
8	Corylus avellana	15lt
2	Carpinus betulus	2-14cm girth
1	Sorbus commixta 'Embley'	8-10cm girth
3	Sorbus aucuparia 'Streetwise'	10-12cm girth
HEDGE 1 - 281m mixed native species staggered row 450 centres		
32	Acer campestre	br whip 90-120cm
32	Crataegus monogyna	br whip 90-120cm
32	Carpinus betulus	br whip 90-120cm
32	Cornus sanguineum	br whip 90-120cm
32	Euonymus europaeus	br whip 90-120cm
32	Ilex aquifolium	br whip 90-120cm
32	Rosa canina	br whip 90-120cm
32	Ligustrum vulgare	br whip 90-120cm
32	Viburnum opulus	br whip 90-120cm

NR	PLANT	SIZE
HEDGE 2 - 191m single row 450 centres		
38	Prunus laurocerasus	100/120cm

TREE ROOT PROTECTION

**CAR PARK AREAS**  
Greenblue Urban RER600A ReRoot 600 with root deflecting ribs to 9m2 Strata cell or similar modular vehicular tree rooting system 500 deep above clean subsoil with suitable balanced topsoil backfill.

**ACCESS RD**  
Tarmac and 200 deep clean crushed stone base in Cellweb modular cell confinement system over clean subsoil base to arboricultural report recommendations. Raise road level along indicated section with flush kerbs to avoid unnecessary excavation to future rootzone area.

PLANTING SCHEDULE

NR	SPECIES	SIZE	CODE
21	Arcostaphylos 'Vancouver Jade'		3lt
15	Aucubaj japonica 'Rozannie'		3lt
18	Caryopteris x c 'Worcester Gold'		3lt
8	Cistus x corbariensis		3lt
3	Corylus maxima 'Purpurea'		5-7.5lt
16	Escallonia 'Golden Ellen'		3lt
3	Eleagnus maculata 'Pungens'		5-7.5lt
22	Euonymus fortunei 'Coloratus'		2lt
24	Hebe 'Sutherlandii'		3lt
32	Lavandula x intermedia 'Grosso'		3lt
8	Laurus nobilis		5-7.5lt
2	Mahonia 'Winter sun'		5-7.5lt
28	Mahonia aquifolium 'Apollo'		3lt
16	Osmanthus delavayi		10lt
20	Pennisetum alopecuroides		2lt
32	Potentilla fruticosa 'Abbotswood'		3lt
15	Prunus 'Otto Luyken'		3lt
5	Ribes s. 'Pulborough scare'		5-7.5lt
19	Stephandra incisa 'Crispa'		3lt
30	Spiraea 'Shirobana'		3lt
4	Viburnum x juddii		3lt

- ArVa
- AuRo
- CaWo
- CiCo
- CoMa
- EsGo
- EIPu
- EuCo
- HeSu
- LaGr
- LaNo
- MaWi
- MaAp
- OsDe
- PeHe
- PoAb
- PrOT
- RiSa
- StCr
- SpSh
- ViJu



WW Rd boundary treatment  
Black steel railings and laurel hedge 1.2m high